



DS-6500

DMR dispatcher solution

The DS-6500 is a complete dispatcher solution from Hytera that is immediately operational. With integrated Hytera mobile radios, a powerful computer and the proven dispatcher software SmartDispatch, the DS-6500 is suitable for applications in all areas, such as industry, public utilities and disposal companies.

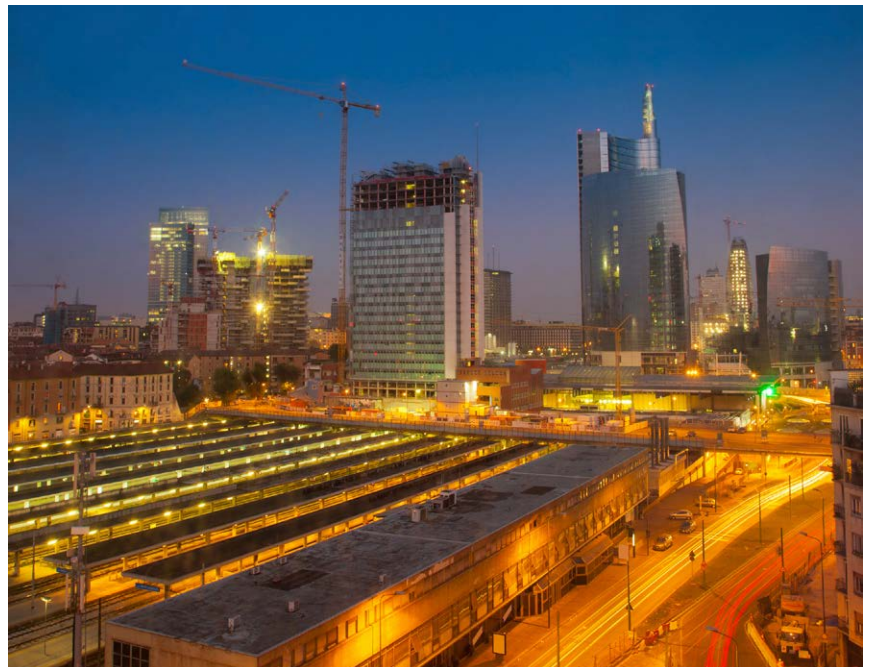
Simply connect the DS-6500 according to the plug-and-play principle and immediately utilize the extensive dispatcher functions!



Dispatcher

DS-6500

DMR dispatcher solution



Highlights

Complete dispatcher solution

The clearly arranged chassis contains all the components for immediate operation: a powerful computer, the dispatcher software SmartDispatch, the Hytera MD785 mobile radios, an integrated power supply as well as a multi-channel sound card for an expansion of up to four mobile radios.

Plug and Play

As a complete dispatcher solution, DS-6500 can be taken to any operation site, conveniently and flexibly. In its delivery state, the DS-6500 is already completely preconfigured and, as such, can be used immediately. With the preinstalled programming software "CPS", you can quickly and easily adjust the configuration of the integrated mobile radios to your existing frequency and working environment (groups, call numbers, etc.).

Extensive dispatcher functions

The DS-6500 offers the complete scope of services of the dispatcher software SmartDispatch from Hytera in a complete solution. Standard functions of the SmartDispatch include voice communication, GPS-based services, short messages and system-wide voice recording. The included software as well as licenses can be expanded without any problems using software upgrades.

User-oriented design

VGA, DVI as well as HDMI interfaces are available on the rear side of the device for connecting monitors. The intuitive user interface of the SmartDispatch offers a state-of-the-art and efficient dispatch workplace.

Flexible operation of mobile radios

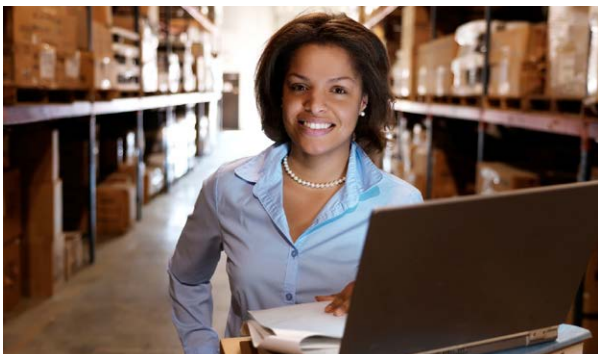
Operating the mobile radios leaves you with complete freedom: All Hytera devices, digital or analog, can be controlled by the SmartDispatch software. In digital radio service, users also have access to expanded data functions.

Variants

In its standard design, the DS-6500 contains two built-in MD785. Upon request, the dispatcher solution is also available with only one MD785.

Simple expandability

In the standard design, two additional MD785 can be connected to the rear side of the chassis. This expands the capacity to a utilization of up to 8 timeslots. Thanks to the all-in-one design, you do not have to worry about any hardware compatibilities.



Overview of DS-6500 - DMR dispatcher solution

Plug and Play

Complete and preinstalled dispatch solution in a single chassis. No compatibility issues, low maintenance effort

Extensive dispatch functions

Complete scope of functions of the Hytera SmartDispatch



Adaptable

For a utilization of two to eight timeslots

Many connections for peripheral devices

Connection options for monitors, MD785, USB, etc.

Functions of the dispatcher software SmartDispatch

SmartDispatch is Hytera's dispatcher system, which was developed in accordance with the digital ETSI radio standard DMR.

SmartDispatch is designed for an efficient communication and supports you in managing and directing the radio subscribers in the Hytera DMR radio system.

Support of all call types

SmartDispatch supports all available call types: individual call, group call and include call.

Disabling and Re-enabling radios

Mobile radios can be blocked and unblocked from the control room with the help of SmartDispatch.

Position detection via GPS

SmartDispatch is capable of querying the exact location data of all GPS-enabled terminals in the DMR radio system.

Voice recording and playback

All incoming and outgoing calls are logged by the SmartDispatch server.

Additional Functions (selection)

- Receiving and analyzing online/offline status messages from mobile radios
- SmartDispatch can eavesdrop on the respective environment via unlocked mobile radio microphones
- Geofencing: Self-definable areas on a digital map define which areas the mobile radios may not leave in the field
- Statistics and analyses for calls, messages as well as state and tracking reports
- Text messages of DMR text messages in a chat-oriented user interface
- Over-the-air telemetry and programming for monitoring and for programming mobile radios from a remote location
- IP connection of repeaters to enable a network-wide voice recording and a direct control of the timeslots of repeaters
- Integration of own language packs without restart

Additional information about Hytera SmartDispatch is available in the SmartDispatch product flyer or at www.hytera-mobilfunk.com.

Technical Data

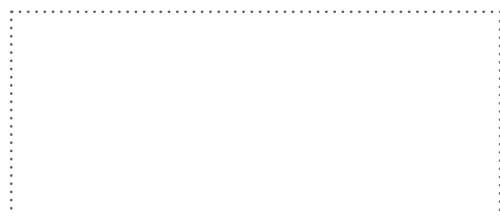
General data	
Frequency range	VHF: 136 MHz – 174 MHz UHF: 400 MHz – 470 MHz
Zone capacity	64 (with max. 16 channels each)
Channel spacing	12.5 / 20 / 25 kHz
Dimensions (H x W x D)	136 x 440 x 288 mm
Weight	approx. 8,5 kg

Ambient data	
Operating temperature range	0 °C to +50 °C
Storage temperature range	-20 °C to +70 °C
Relative humidity	5% to 95% relative humidity, non-condensing
ESD	IEC 61000-4-2 (level 4) 6 kV (contact), 8 kV (air)
In compliance with	CE, FCC
Additional standards	RoHS

Device specification / hardware specification	
CPU	Intel® Core 2 Duo processor P8400 (3 MB cache, 2.26 GHz, 1066 MHz FSB)
System memory (RAM)	2 GB DDR2 800 MHz
Hard disk	500 GB SATA
Monitor connections	1 x HDMI, DVI and VGA each
Network interface	2 x RJ-45 network connectors with 10/100/1000 Mbits
Audio connections	1 x 3.5-mm audio input (Mic-in) 1 x 3.5-mm audio output (Line-out)
Additional interfaces	2 x serial ports (RS-232) 6 x USB 2.0 2 x PS/2 (for keyboard and mouse)
Antenna connectors	Rf BNC socket depending on the mobile radio
Voltage supply	ATX power supply with 500 W, 90 – 256 V _{AC} voltage input
On/off switch	A switch with integrated LEDs
Operating noise	≤45 dB
Operating system	Microsoft® Windows 7 or higher
Built-in mobile radios	2 mobile radios MD785, two additional ones can be connected. Variant with an integrated mobile radio upon request.
Supported languages (dispatcher)	English and German, additional languages upon request

All technical specifications were tested according to the relevant standards. Subject to change on the basis of continuous development.

Your Hytera partner:



Hytera Mobilfunk GmbH

Address: Fritz-Hahne-Straße 7, 31848 Bad Münder, Germany
Tel.: +49 (0)5042 / 998-0 **Fax:** +49 (0)5042 / 998-105 **E-mail:** info@hytera.de
www.hytera-mobilfunk.com

Further information can be found at:

www.hytera-mobilfunk.com

Contact us if you are interested in purchasing, sales or application partnerships:

✉ info@hytera.de



SGS certificate DE11/81829313

Hytera Mobilfunk GmbH reserves the right to modify the product design and the specifications. In case of a printing error, Hytera Mobilfunk GmbH does not accept any liability. All specifications subject to change without notice.

Encryption features are optional and have to be configured separately; they are also subject to German and European export regulations.

HYT Hytera are registered trademarks of Hytera Co. Ltd. ACCESSNET® and all derivatives are protected trademarks of Hytera Mobilfunk GmbH. © 2014 Hytera Mobilfunk GmbH. All rights reserved.